

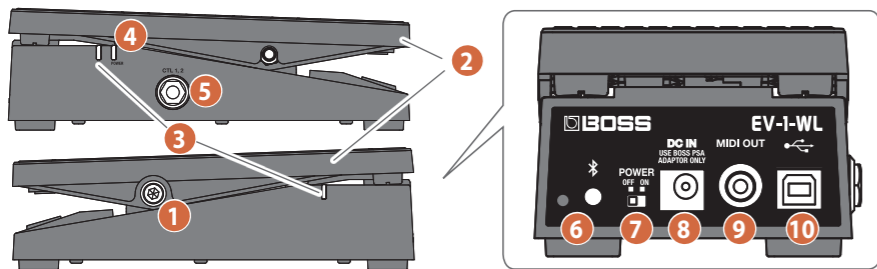
Before using this unit, carefully read "USING THE UNIT SAFELY" and "IMPORTANT NOTES" (the leaflet "USING THE UNIT SAFELY" and the Owner's Manual). After reading, keep the document(s) where it will be available for immediate reference.

**An Overview of the EV-1-WL**

The EV-1-WL is an expression pedal that can be used wirelessly.

- This pedal can transmit and output MIDI messages via Bluetooth MIDI, MIDI connector or USB port.
- Connect this unit to the "EV-1-WL Editor" app to customize the transmitted MIDI CC numbers as well as the pedal response curve and indicator colors.
  - The app can be downloaded from the App Store (iOS products) or from Google Play (Android products).

**Panel Descriptions**



MIDI CC number list (default value)

Parameter	MIDI CC numbers
EXP	CC#11 (When EXP SW is OFF) CC#1 (When EXP SW is ON)
EXP SW	CC#82
CTL1	CC#80
CTL2	CC#81

Name	Explanation
------	-------------

**1 Torque adjustment screw**  
 You can change the force or load required to pivot the pedal (the pedal torque) by adjusting the screw located on the right side of the unit.  
**Lighter** **Heavier**  
 \* Use a commercially available hexagon socket screw key (5 mm) to adjust the screw.  
 \* Take care not to overtighten the screw; doing so may damage the unit.

**2 Pedal**  
 Press down on the pedal to control the MIDI CC numbers that you have set (default value when EXP SW is off: CC#11, when EXP SW is on: CC#1).  
**Turning the EXP SW on/off**  
 Push up on the pedal strongly with your toes to turn the EXP SW on/off. This lets you control a different MIDI CC number from the one that the pedal itself controls (default value: CC#82).  
 \* When you operate the pedal, please be careful not to get your fingers pinched between the movable part and the unit. In places where small children are present, make sure that an adult provides supervision and guidance.  
 \* Do not put your hands or fingers in the openings of the pedal.

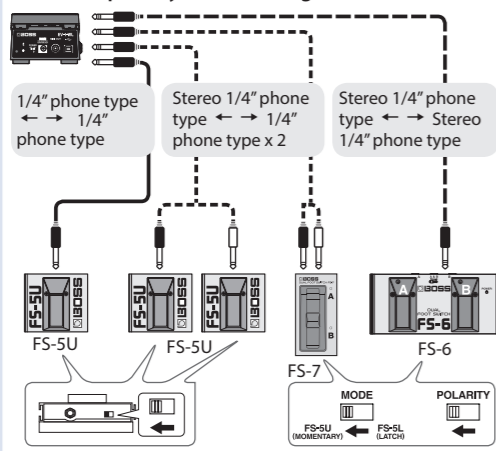
**3 EXP SW indicator (both sides)**  
 This indicator lights when the EXP SW is on. You can change the color of the light by using a dedicated editor.

**4 POWER indicator**

Lit green	There is sufficient battery power.
Lit red	The battery will be depleted in two hours.

**5 CTL1, 2 jacks**  
 Connect a footswitch (FS-SU, FS-6 or FS-7, sold separately) to these jacks. You can use a footswitch to control a different MIDI CC number than the ones controlled by the pedal and EXP SW. (Default value for CTL1: CC#80; default value for CTL2: CC#81)

**Mode and polarity switch settings for the footswitch**



Name	Explanation
------	-------------

**6 [Bluetooth] button Bluetooth indicator**  
 Use this button to register a Bluetooth device. This is also used to display the Bluetooth connection status.  
 \* The mode changes each time you press rapidly the [Bluetooth] button twice (Blue / White).  

Lit	Connected
Blinks rapidly	Pairing mode
Blinking	Disconnected

**7 [POWER] switch**  
 Turns the power on/off.

**8 DC IN jack**  
 Connect an AC adaptor (PSA Series, sold separately) to this jack.  
 \* Use only the specified AC adaptor (PSA Series, sold separately), and make sure the line voltage at the installation matches the input voltage specified on the AC adaptor's body.  
 \* If you connect an AC adaptor while the batteries are installed, power is supplied from the AC adaptor side.

**9 MIDI OUT connector**  
 Connect this to the MIDI IN connector of an external MIDI device with a TRS/MIDI connecting cable (BMIDI-5-35, sold separately).  
 \* Do not use this to connect audio devices. Doing so may cause a malfunction.

**10 USB port**  
 Use a commercially available USB cable to connect this unit to the USB port on your computer. The unit operates as a USB MIDI device. There is no need to install a driver.

\* To prevent malfunction and equipment failure, always turn down the volume, and turn off all the units before making any connections.

**Connecting Wirelessly (Pairing)**

"Pairing" involves registering the MIDI device that you want to use (making the two devices recognize each other) with the EV-1-WL. After pairing, you can transmit and receive MIDI data between the EV-1-WL and your MIDI device.

**MEMO**

- Place the MIDI device that you want to connect near the EV-1-WL.
- This unit automatically memorizes and connects to the MIDI device to which it was last paired, so there is no need to pair the devices again. However, pairing must be done each time for the Mac, iPhone and Android devices.
- To initialize a MIDI device that you have already paired, you must pair the devices again.

**Connecting the EV-1-WL to supported devices**

For the connection method for each supported device, refer to the "EV-1-WL Connection Guide" (PDF).

➔ "EV-1-WL Connection Guide" (PDF)

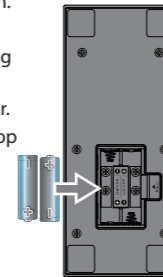
[https://roland.cm/ev-1\\_wl\\_om](https://roland.cm/ev-1_wl_om)



**Replacing the Batteries**

Insert the batteries in the correct direction as shown in the illustration.

- To prevent this product from operating incorrectly or malfunctioning, insert or replace the batteries before connecting this product to another device.
- Use alkaline batteries if you are running the unit on battery power.
- When turning the unit over, handle the unit carefully; do not drop it.
- If you handle batteries improperly, you risk explosion and fluid leakage. Make sure that you carefully observe all of the items related to batteries that are listed in "USING THE UNIT SAFELY" and "IMPORTANT NOTES" (leaflet "USING THE UNIT SAFELY").



**Returning to Factory Settings (Factory Reset)**

- Push down on the pedal with your heel without anything connected to the CTL1, 2 jacks, USB port and MIDI OUT connector.
  - Turn the [POWER] switch on while holding down the [Bluetooth] button. The POWER indicator blinks green.
  - Push up on the pedal with your toes. The EXP SW indicator blinks green.
  - Press the [Bluetooth] button. This performs a factory reset. The EXP SW indicator blinks red during factory reset.
- \* Do not turn off the power while the indicator is blinking red.

**Adjusting the Pedal Response and Effect Depth (Calibration)**

Use these steps to set the MIN position and MAX positions for operating the pedal.

- Push up on the pedal with your toes, without anything connected to the CTL1, 2 jacks, USB port and MIDI OUT connector.
  - Turn the POWER switch on while holding down the [Bluetooth] button. The POWER indicator blinks green.
  - Push down on the pedal with your heel. The EXP SW indicator blinks blue.
  - Press the [Bluetooth] button once more. Calibration mode starts, and the EXP SW indicator blinks white.
  - With the pedal pushed down all the way with your heel, press the [Bluetooth] button. This sets the pedal's MIN position. The EXP SW indicator blinks yellow.
  - With the pedal pushed up all the way with your toes, press the [Bluetooth] button. This sets the pedal's MAX position. The calibration is now finished.
- \* Turn the POWER switch OFF if you wish to cancel the calibration partway through.

**Main Specifications**

Power Supply	Alkaline battery (AA, LR6) x 2 AC adaptor (sold separately)
Current Draw	75 mA
Expected battery life under continuous use	Alkaline battery: 30 hours * These figures will vary depending on the actual conditions of use.
Dimensions	87 (W) x 200 (D) x 62 (H) mm 3-7/16 (W) x 7-7/8 (D) x 2-7/16 (H) inches
Weight	600 g / 1 lb 6 oz 650 g / 1 lb 7 oz (including batteries)
Accessories	Owner's Manual Leaflet "USING THE UNIT SAFELY" Alkaline battery (AA, LR6) x 2
Options (sold separately)	Footswitch: FS-SU Dual footswitch: FS-6, FS-7 TRS/MIDI connecting cable: BMIDI-5-35

\* This document explains the specifications of the product at the time that the document was issued. For the latest information, refer to the Roland website.

Copyright (c) 2014, Kenneth MacKay  
All rights reserved.

Redistribution and use in source and binary forms, with or without modification, are permitted provided that the following conditions are met:

- \* Redistributions of source code must retain the above copyright notice, this list of conditions and the following disclaimer.
- \* Redistributions in binary form must reproduce the above copyright notice, this list of conditions and the following disclaimer in the documentation and/or other materials provided with the distribution.

THIS SOFTWARE IS PROVIDED BY THE COPYRIGHT HOLDERS AND CONTRIBUTORS "AS IS" AND ANY EXPRESS OR IMPLIED WARRANTIES, INCLUDING, BUT NOT LIMITED TO, THE IMPLIED WARRANTIES OF MERCHANTABILITY AND FITNESS FOR A PARTICULAR PURPOSE ARE DISCLAIMED. IN NO EVENT SHALL THE COPYRIGHT HOLDER OR CONTRIBUTORS BE LIABLE FOR ANY DIRECT, INDIRECT, INCIDENTAL, SPECIAL, EXEMPLARY, OR CONSEQUENTIAL DAMAGES (INCLUDING, BUT NOT LIMITED TO, PROCUREMENT OF SUBSTITUTE GOODS OR SERVICES; LOSS OF USE, DATA, OR PROFITS; OR BUSINESS INTERRUPTION) HOWEVER CAUSED AND ON ANY THEORY OF LIABILITY, WHETHER IN CONTRACT, STRICT LIABILITY, OR TORT (INCLUDING NEGLIGENCE OR OTHERWISE) ARISING IN ANY WAY OUT OF THE USE OF THIS SOFTWARE, EVEN IF ADVISED OF THE POSSIBILITY OF SUCH DAMAGE.

**USING THE UNIT SAFELY**



Take care so as not to get fingers pinched

When handling the following moving parts, take care so as not to get fingers, toes, etc., pinched. Whenever a child uses the unit, an adult should be on hand to provide supervision and guidance.

- Pedal

**IMPORTANT NOTES**

**Power Supply: Use of Batteries**

- The life of the supplied batteries may be limited, since its primary purpose was to enable testing.
- If operating this unit on batteries, please use alkaline batteries.

**Placement**

- Depending on the material and temperature of the surface on which you place the unit, its rubber feet may discolor or mar the surface.

**Repairs and Data**

- Before sending the unit away for repairs, be sure to write down the needed information. Although we will do our utmost to preserve the data stored in your unit when we carry out repairs, in some cases, such as when the memory section is physically damaged, restoration of the stored content may be impossible. Roland assumes no liability concerning the restoration of any stored content that has been lost.

**Additional Precautions**

- Any data stored within the unit can be lost as the result of equipment failure, incorrect operation, etc. To protect yourself against the irretrievable loss of data, try to make a habit of writing down the needed information.

• Roland assumes no liability concerning the restoration of any stored content that has been lost.

• When disposing of the packing carton or cushioning material in which this unit was packed, you must observe the waste disposal regulations that apply to your locality.

**Caution Regarding Radio Frequency Emissions**

- The following actions may subject you to penalty of law.
  - Disassembling or modifying this device.
  - Removing the certification label affixed to the back of this device.
  - Using this device in a country other than where it was purchased

**Intellectual Property Right**

• The Bluetooth® word mark and logos are registered trademarks owned by Bluetooth SIG, Inc. and any use of such marks by Roland is under license.

• Roland, BOSS are either registered trademarks or trademarks of Roland Corporation in the United States and/or other countries.

• Company names and product names appearing in this document are registered trademarks or trademarks of their respective owners.



**For the USA**  
 This transmitter must not be co-located or operated in conjunction with any other antenna or transmitter.  
 (FCC Part15 Subpart C §15.247, 15.253, 15.255)  
 This equipment complies with FCC radiation exposure limits set forth for an uncontrolled environment and meets the FCC radio frequency (RF) Exposure Guidelines as this equipment has very low levels of RF energy.  
 (FCC Part15 Subpart C §15.247, 15.253, 15.255)

**For Canada**  
 This device contains licence-exempt transmitter(s)/receiver(s) that comply with Innovation, Science and Economic Development Canada's licence-exempt RSS(s). Operation is subject to the following two conditions:  
 1. This device may not cause interference.  
 2. This device must accept any interference, including interference that may cause undesired operation of the device.  
 L'émetteur/récepteur exempt de licence contenu dans le présent appareil est conforme aux CNR d'Innovation, Sciences et Développement économique Canada applicables aux appareils radio exempts de licence. L'exploitation est autorisée aux deux conditions suivantes:  
 1. L'appareil ne doit pas produire de brouillage;  
 2. L'appareil doit accepter tout brouillage radioélectrique subi, même si le brouillage est susceptible d'en compromettre le fonctionnement.  
 (RSS-Gen §8.4)  
 This equipment complies with ISED radiation exposure limits set forth for an uncontrolled environment and meets RSS-102 of the ISED radio frequency (RF) Exposure rules as this equipment has very low levels of RF energy.  
 Cet équipement est conforme aux limites d'exposition aux rayonnements énoncées pour un environnement non contrôlé et respecte les règles d'exposition aux fréquences radioélectriques (RF) CNR-102 de l'ISDE puisque cet appareil a une niveau tres bas d'énergie RF.  
 (RSS-102 §2.6)

**For the USA**  
**SUPPLIER'S DECLARATION OF CONFORMITY Compliance Information Statement**  
 Model Name: EV-1-WL  
 Type of Equipment: Wireless MIDI Expression Pedal  
 Responsible Party: Roland Corporation U.S.  
 Address: 5100 S. Eastern Avenue Los Angeles, CA 90040-2938  
 Telephone: (323) 890-3700